



Dear Parents, Friends, Ladies and Gentlemen,

I wish to present to you the Annual Report for the year 2001. Through this report, we would like to share with you the results of our work, to convince you of its importance and finally to thank all those who contributed to our success, either financially, by work or by support to our clients.

Mgr. Terezie Hradilková

Director of the Association

Prague, April 2002

Calendar of events in 2001

- January** - reconstruction of new premises of the regional Early Intervention Centre (EIC) Brno
- 31. 1.** - staff recruitment in EIC Ostrava
- 15. 3.** - official opening of the new premises in Brno
- 9. 4.** - Extraordinary general meeting
- 19. - 25. 5.** - One week Course for families with children with visual impairment, Czech region
- 13. - 21. 5.** - One week Course for families with children with multiple disabilities, Moravian region
- 26. 5. - 3. 6.** - One week Course for families with children with multiple disabilities, Czech region
- 21. 6.** - the Board meeting - decision to found the seventh EIC in Plzen
- 4. - 7. 7.** - 1st Central European Workshop „The Early Intervention - the Current State of the Practice“, Prague
- 20. 8.** - Meeting of families in EIC Liberec
- 18. 9.** - Official opening of new premises of the EIC České Budějovice
- 7. - 8. 9.** - Seminar with the Finnish ophthalmologist Lea Hyvarinen, Prague
- 9. - 15. 9.** - One week Course for families with children with visual impairment, Moravian region
- 25. 10.** - Team supervision meeting of all Moravian EIC
- 5. - 9. 11.** - Course for physiotherapists „Physiotherapist as a Member of the Early Intervention Team“
- 29. 11.** - Seminar for all expert staff of our Association
- 30. 11.** - Annual General meeting
- 5. 12.** - St. Claus and Christmas gatherings for clients in all EIC



The Association for Early Intervention is a non-governmental organisation which provides professional services, support and assistance to families with young children with visual and also multiple disabilities.

It offers parents (or legitimate representatives) a comprehensive range of services - information, support, therapies - which enable parents to become competent, independent, and responsible in the stimulation and education of their children during their early childhood.

The Association prefers home-based services - the family and child thus remain in the familiar environment of their community and do not need to be taken from their natural surroundings.

It has implemented the programme „GUIDANCE“ aimed at the support for the whole family, promoting self-reliance and exploiting fully the potential and abilities of each individual.

The Association was founded in November 1997 as a civic association for the management of the operation of Early Intervention Centres, which have been engaged in early intervention assistance since 1990.

These Early Intervention Centres in Brno, České Budějovice, Liberec, Olomouc, Ostrava and Prague are regional centres for support of and guidance to families with children with visual and multiple disabilities. The centres create multidisciplinary teams that comprise both staff members and external expert collaborators who - along with the parents - seek and foster the most appropriate ways to stimulate the child, taking into account all specifics and the unique character of different families.

The Centres send their Early Intervention consultants to families all over the country. These consultants are responsible for counselling and coordination of support to individual clients in the region assigned to them.

In 1998 the Methodology Centre was established to coordinate and provide professional and expertise guidance to the Early Intervention Centres.

The objectives of the Association also include the task of defending the rights of parents with children with disabilities, and efforts to work towards legislative changes that would give early intervention the status of a service and separate discipline.

Therefore, in 2001 the Association cooperated with:

- medical centres and clinics so that continuous and smooth transition between different kinds of treatment could be ensured for the families and children. It is only by mutual collaboration that early diagnosis and efficient subsequent help can be achieved.
- client groups and client organisations. The Association protects their interests and helps them enforce their rights. The Early Intervention Centres serve as a platform for meetings of parents who can share their experience and exchange their views.
- specialists from follow-on educational institutions (nursery schools, special education counselling centres, day-care facilities, the National Institute for the Deaf in the programme for deaf - blind children)
- early intervention providers abroad and international organisations of professionals. The International Council for the Education of the Visually Impaired - ICEVI, Perkins School for the Blind, SENSIS International - they all have contributed to the GUIDANCE programme by sharing information, providing supervision, staff training and financial support
- non-governmental organisations and social health services providers in an effort to improve the position of the non-governmental sector (SKOK, BANNON), sharing expertise with The Diakonie, Early Intervention Centre of the Parents' association for children with hearing impairment, STŘEP, etc.
- local administration in client's homes Local (Regional and Authorities, Municipal Authorities, City Halls)
- state administration - the Ministry of Health of the Czech Republic, the Ministry of Work and Social Affairs and the Ministry of Education, representatives of the Government Committee for people with disabilities, Members of the Parliament...

Organisational structure



Chairwoman:
PaedDr. Jana Vachulová



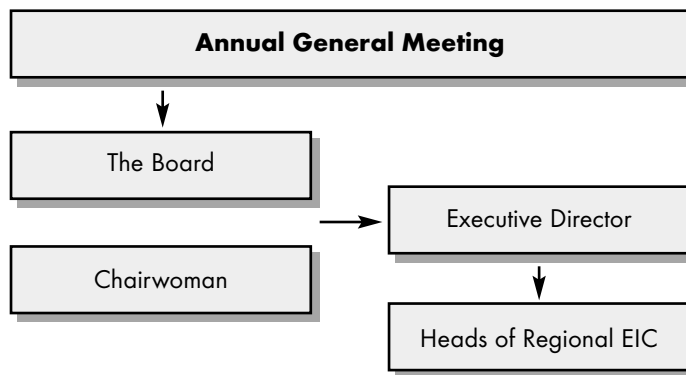
Executive Director:
Mgr. Terezie Hradilková

Control Board:

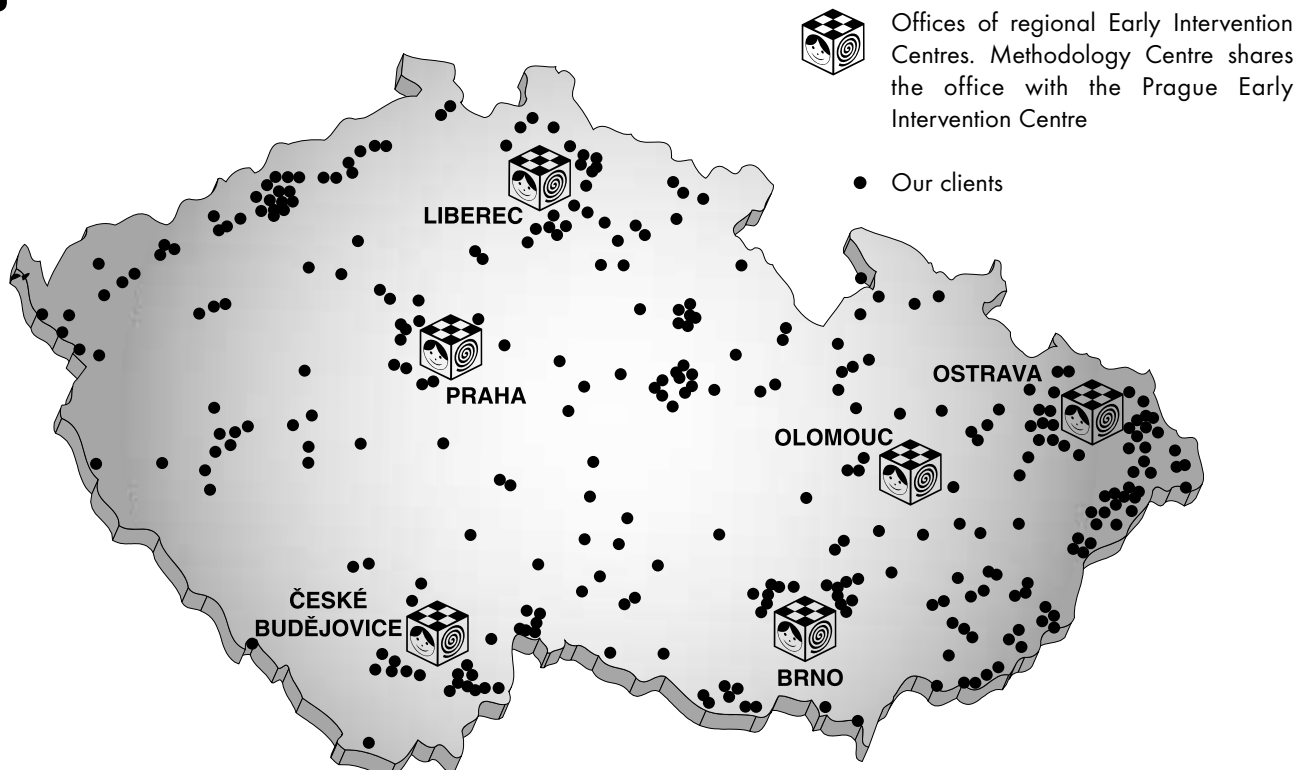
Michal Voráček
Ing. Věra Likešová
Miroslav Petr

Honorary Board:

Prof.MUDr. Miloš Velemínský - neonatologist
Anna Šabatová - public rights protection
Pavla Francová - Olympic winner
prim. MUDr. Vladimír Kantor - neonatologist
Vladimír Michálek - film director



Regional EIC and Clients





Clients:

The clients of the Association for Early Intervention are families (parents or legitimate representatives) of children with visual and multiple disabilities at an early age (i.e. from birth until 4 years of age, children with multiple disabilities until 7 years). Upper age limit depends on capacity of each centre and may be reduced to 3/6 years.

Number of Clients	Total
Clients in 2001	484
- with multiple disabilities	382
- in institutions or other facilities	10
Clients - care started in 2001	115
Clients - care ended in 2001	91

Services:

The standard range of services of all the Centres comprises consultations, family support, child development stimulation, integration, assistance in protection of rights and interests of the families, provision of information education and training.

Forms of services:

- home based services: home-based consultations in the families are. The key activity of the Early Intervention Centres. Specifically trained and educated professionals make regular calls on families with young children with visual impairments, and provide support and professional consultations to parents, while acting as their companions throughout the child's early education. The main advantage of consultations being provided in clients' homes as opposed to classic centre-based care is the fact that the child remains in his or her familiar environment, and therefore can easily open up, thus improving the efficiency of the whole process. This brings another advantage for the family - not having to do any unnecessary travelling, which is usually unpleasant and wearisome for the child.
- centre-based services (provided in the Early Intervention Centres): stimulation of vision, physiotherapy, occupational therapy, musical therapy, assistance of the psychologist
- lending of methodology materials, books, toys and special aids
- Rolnička („Jingle-bell“) magazine
- week-long rehabilitation courses for the families - in addition to professionally managed workshops, this is the place where the parents can exchange views and information, share their experience, and find support and understanding in one another
- support of the families by accompanying them when visiting professionals and institutions, on dealing with authorities, etc.

The regional EIC also offer (to the best of the extent of their means and staff abilities) certain therapies and interdisciplinary services, and to different extents they also support all independent and self support activities of the families.

- home-based therapy (in families)
- centre-based therapy
- group meetings of families and organised visits
- complex overall analysis and assessment of the child's development and client's needs

Overview of Services	Total
Total number of early intervention consultants' home visits	1843
Total number of centre-based services in EI Centres	554
Total number of visits to institutions and facilities	40

The institutions and those who are not clients of the Association for Early Intervention can avail of the paid services in accordance with the valid tariff.



Methodology Centre

Director of the Association for Early Intervention: Mgr. Terezie Hradilková

Haštalská 27

110 00 Praha 1

tel.: (+42) 02/248 268 60, 248 268 57 (from 22. 9. 02: 224 826 857, 224 826 860)

fax: (+42) 02/248 268 58 (from 22. 9. 02: 224 826 858)

e-mail: praha@ranapece.cz

Financial management: Ing. Věra Likešová

Coordinator of project: Silvia Senciová, Marie Hlavičková

Assistant (doing his non-military Army service with us): Ing. Jan Otýpka, Ondřej Zahradník

Advisory board of the director: methodology council includes experts from the Association for Early Intervention:

PaedDr. M. Skalická, methodologist of vision stimulation

Lucie Gregorová, methodologist of locomotive development

Mgr. Tímea Vidová, methodologist for support to parents

PaedDr. Jana Vachulová, methodologist for integration

The Methodology Centre coordinates executive and professional activities of the Early Intervention Centres it provides administrative, expert and information background in the way that the EI Centres can provide services throughout the Czech Republic on a level conforming to adopted standards and in line with the Regulations. It ensures and promotes further education of employees, and arranges courses and training. The Methodology Centre also enters into and maintains international contacts, presents the Association for Early Intervention both in the Czech Republic and abroad. It has created and now operates a library and prepares professional materials for students, parents, employees and cooperating experts.

Staff training in 2001:

Seminar for expert staff - November

Team supervision for the Moravian region January - June

Supervision using the method of Videotraining of Interactions

Supervising visit of Helen Verbunt, SENSIS, Holland - functional vision assessment

Altogether 142 333,- Kč was spent on further training and education of the staff.

We participated in the following international projects:

The Methodology Centre organised in collaboration with American Perkins School for the Blind and the foundation SENSIS, Netherlands, **The 1st Central European Seminar on Early Intervention for families of children with visual impairment**. The seminar took place in June in Prague and was chaired by Terezie Hradilková, ČR, and Tom Miller, USA. The participants were 13 representatives from Austria, Slovakia, Germany, Croatia and Poland and 7 representatives of Early Intervention Centres in ČR. One day of the seminar was open to external specialists. The seminar was organised with financial support of NROS - Phare

In 2000 we cooperated with the following international organisations:

ICEVI, Eurllyaid, Hilton/Perkins International Program, SENSIS International



1. Central European Workshop „The Early Intervention - the Current State of the Practice”

July 5th - 7th 2001, Prague

Early Intervention Centre Brno

Head of the Centre: Mgr. Ivana Kudelová

Kabátníkova 7

602 00 Brno

tel.: (+42) 05/432 466 75 (from 22. 9. 2002: 541 236 743)

e-mail brno@ranapece.cz

The Centre in Brno is the second largest of the centers both in numbers of clients and staff. Shortly after the celebration of the 10 years of existence together with the Centre in Prague there was an important change. In the beginning of the year 2001 we managed without any disruption in the service provision to relocate our centre in new offices in Kabátníkova street, leased to us thanks to a very welcoming approach of the local authority of the Královo Pole city district.

Early Intervention Centre České Budějovice

Head of the Centre: Mgr. Andrea Sitařová

Jizerská 4

370 11 České Budějovice 2

tel./fax: (+42) 038/552 00 88 (from 22. 9. 02: 385 520 088)

e-mail: budejovice@ranapece.cz

In February our centre with the support of the Authorities of České Budějovice Muncipal Authority found new offices at the premises of the Jizerská street kindergarden. With the help of many supporters and volunteers we adapted this space to create a pleasant base for both home-visiting consultants and for clients, who come here to avail of centre-based services such as vision stimulation, occupational therapy, consultations with psychologist and self-support parents group.

Early Intervention Centre Liberec

Head of the Centre: PaeDr. Alexandra Bečvářová

Náměstí E. Beneše 22

460 01 Liberec 1

tel./fax: (+42) 048/510 95 64 (22. 9. 02: 485 109 564)

e-mail : liberec@ranapece.cz

EIC Liberec is located in newly reconstructed offices in municipal house on the main square of the city. It serves a rather rugged and hilly region, which makes the home-visiting sometimes very challenging, especially during winter months. We compiled and published the booklet „Everything can be done, though in another way“ for parents - EI clients.

Early Intervention Centre Olomouc

Head of the Centre: Mgr. Dagmar Krutilová

Dolní náměstí 38

770 00 Olomouc

tel./fax: (+42) 068/522 29 21 (22. 9. 02: 685 222 921)

e-mail: olomouc@ranapece.cz

The EIC Olomouc is located in a municipal house on one of the main squares in the centre of Olomouc together with other non-profit organisations, which allows broad collaboration. The Centre takes part in activities organised by the city and is active in the association of non-profit organisations „Region“. It's aim is to promote interests of civic sector, rights of the people with disabilities and accessibility of the social services. In the last year we organised week-long courses for families in Čeladná, we participated in the organisation of the „Week for Mental Health“ and in testing of the national standards of social services.

Early Intervention Centre Ostrava

Head of the Centre: Mgr. Martina Billová, Mgr. Anna Švubová
Nádražní 110
702 00 Moravská Ostrava
tel./fax: (+42) 069/611 24 73 (22. 9. 02: 596 112 473)
e-mail: ostrava@ranapece.cz

The EIC in Ostrava is the most remote from the Methodology Centre. The region covered by this centre is very various not only geographically, but also in social structure of the inhabitants. Clients and their communities are well informed and are able to help each other, there is also good collaboration with local authorities who are sensitive to the social needs.

Early Intervention Centre, Praha

Head of the Centre: Mgr. Helena Janoušová (until October temporarily: Mgr. Tímea Vidová)
Haštalská 27
110 00 Praha 1
Czech Republic
tel.: (+42) 02/248 268 60, 248 268 57 (from 22. 9. 02: 224 826 860, 224 826 857)
fax: (+42) 02/248 268 58 (from 22. 9. 02: 224 826 858)
e-mail: praha@ranapece.cz

The Centre in Prague is - in terms of the scope - the largest of all the regional EIC. Our home-visitors travel to their clients sometimes the distances over 150 km. In addition to the standard range of services offered, it can, thanks to its multidisciplinary staff, offer the clients other types of services, ranging from physiotherapist consultations, to psychological advice, to centre-based stimulation of vision, to a complex assessment of the child's development.

During the year 2001 we started planning the separation of the western part of the region and founding an Early Intervention Centre in Plzeň. Jana Lukejová was appointed the early intervention consultant for this region and the coordinator of foundation of the Centre. Thanks to the support of the Municipality of Plzeň and several sponsors and foundations the Centre found temporary office s and could start providing services.



The team of the Association for Early Intervention is comprised of:

The clients, early intervention consultants, instructors for vision stimulation, social workers, coordinators of services and projects, director, financial manager, secretary, workers doing civil (non-military) service, cleaners, professional guarantors, cooperating specialists, supervisors and therapists and volunteers.

Our employees in 2001:

Mgr. Radka Babiánková, PaedDr. Alexandra Bečvářová, Mgr. Martina Billová, Eva Brabcová, Filip Čada, Mgr. Šárka Čermáková, Ivan Doležal, Mgr. Markéta Dunděrová, Hana Filípková, Mgr. Martina Gadlinová, Lucie Gregorová, Marie Hlavičková, Magda Hrazdilová, Mgr. Terezie Hradilková, Mgr. Helena Janoušová, Mgr. Dagmar Jelinková, Mgr. Naďa Jiříčková, Otto Kouwen, DiS. Hana Kosová, Mgr. Dagmar Krutilová, Mgr. Ivana Kudelová, Kateřina Kudelová, Jarmila Kuchařová, Mgr. Barbora Kvičinská, DiS. Jana Lukejová, Mgr. Kamila Marcinková, Kateřina Morongová, Martina Papoušková, Bc. Olga Parkanová, Mgr. Pavla Perglová, Miroslav Petr, Olga Petrová, Bc. Alice Pexiederová, Mgr. Pavlína Prymusová, Kristýna Sabáčková, Alžběta Saláková, DiS. Eva Sikorová, Silvia Senciová, Mgr. Andrea Sitařová, PaedDr. Markéta Skalická, Mgr. Zita Sýkorová, Mgr. Martina Šmahová, Jana Štindlová, Mgr. Anna Švubová, Mgr. Jana Tušlová, PaedDr. Jana Vachulová, Mgr. Tímea Vidová, Mgr. Hana Volná, Mgr. Jiří Votava

Financial manager:

Ing. Věra Likešová

Expertise guarantors:

MUDr. Marie Holoušková, Prim. MUDr. Lumír Kantor, PhDr. Dana Němcová, Prim. MUDr. Stanislav Rodný, MUDr. Zuzana Válková CSc., Prof. MUDr. Miloš Velemínský CSc., MUDr. Anna Zobanová, Doc.PhDr. Václav Břicháček, Doc. PhDr. Lea Květoňová-Švecová PhD, Mgr. Květa Vachudová, Mgr. Eliška Rothová, MUDr. Petr Zoban, CSc.

In civil (non-military) service:

Ing. Jan Otýpka and Ondřej Zahradník in Prague

Special thanks:

to ing. Miroslav Polák as he has been handling the payroll and personnel agenda of our organisation for 5 years now in a very conscientious and accurate way

Overview of employees of the Association for Early Intervention in 2001

Early Intervention Centre	number of employees	full-time equivalent
Methodology Centre	3	2,35
Praha	10	7,09
Č. Budějovice	5	2,82
Liberec	4	3,28
Brno	6	3,83
Olomouc	5	3,38
Ostrava	6	3,27
TOTAL	39	26,04



In accordance with Act No. 563/1991 Coll. on Accounting, our organisation maintains a double-entry accounting. Following the requirement of the government, all our accounts are audited on regular basis. We use many different sources to finance the operation of the Association - over 100 in 2001. The structure of costs and revenues and respective amounts are seen in the following tables and charts.

Structure of revenues (in thous. CZK)		
State subsidies	5316	52,0 %
- Ministry of Health (MZ)	3380	
- Ministry of Work and Social Affairs (MPSV)	1739	
- Ministry of Education (MŠMT)	197	
Contributions from local administration	1402	14,0 %
Contributions from Czech foundations	1441	14,0 %
Contributions from firms	424	4,0 %
Contributions from Phare	100	1,0 %
Contributions from foreign foundations	743	7,0 %
Contributions from individuals	231	2,0 %
Revenues from own secondary business activities (consultations, seminars, advertising, magazine Rolnička, petty sales)	185	2,0 %
Revenues from clients for rehab. courses	164	2,0 %
Reimbursements (e.g. from insurance companies)	89	1,0 %
Interests	144	1,0 %
Revenues from sales of tangible assets	5	
Membership fees	4	
TOTAL	10 248	100 %

Structure of costs (in thous. CZK)		
Wages and salaries	3933	39,0%
Services	1875	18,0 %
Mandatory social and health insurance	1265	12,6 %
Consumption of material (incl. petrol)	914	9,0 %
Depreciation	1295	13,0 %
Travel expenses	437	4,0 %
Repairs and maintenance	141	1,5 %
Financial costs	106	1,0 %
Others costs - civil services	37	0,3 %
Deficits and damages	41	0,4 %
Utilities (energy) consumption	101	1,0 %
Representations	21	0,2 %
Others	6	0 %
TOTAL	10 172	100 %

In 2001, standard services were provided to clients free of charge. The clients shared the costs of the publishing of the magazine one week`s Rolnička, lasting rehabilitation courses and above-standard functional assessments and consultations.

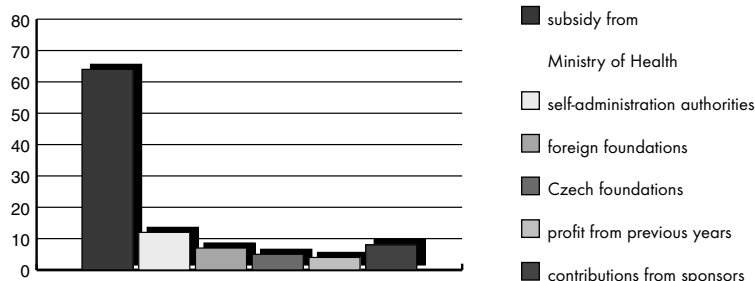
A lot of our clients became sponsors of the GUIDANCE programme and thus helpers to each other. The difference found between the costs and revenues is the profit from secondary business activities and contributions that the Association for Early Intervention received in 2001. These funds are intended to cover the costs in 2002.

Financing of projects implemented in 2001

1) Providing early intervention to children with serious visual impairment and to children with multiple disabilities

budget 5 261 350 CZK

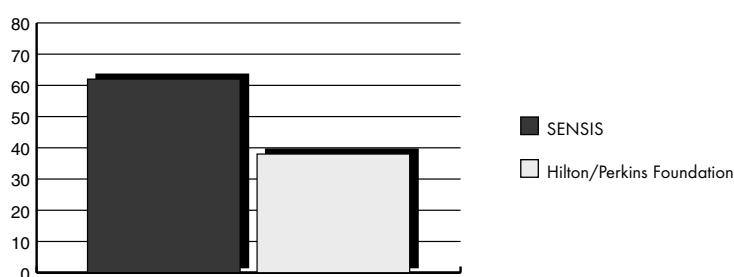
Share in financing of the project	%
subsidy from Ministry of Health	64
self-administration authorities	12
foreign foundations	7
Czech foundations	5
profit from previous years	4
contributions from sponsors	8



2) 1st Central European Workshop - Early Intervention for Families of Children with Visual Impairment

budget 205 224 CZK

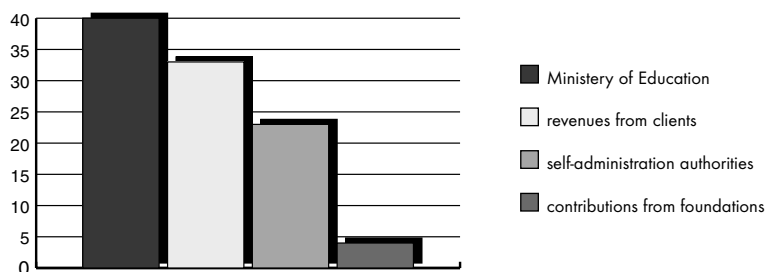
Share in financing of the project	%
SENSIS	62
Hilton/Perkins Foundation	38



3) Rehabilitation courses for families

budget 490 933 CZK

Share in financing of the project	%
Ministry of Education	40
revenues from clients	33
self-administration authorities	23
contributions from foundations	4



4) Home-based early intervention service

A) Basic project

budget 2 749 840 CZK

Share in financing of the project	%
Ministry of Work and Social Affairs	46
foundations	29
self-administration authorities	22
sponsors	3

B) Program of enhancing the quality of services

budget 559 400 CZK

Share in financing of the project	%
Ministry of Work and Social Affairs	70
sponsors (Microsoft...)	28
Nova Foundation	2

C) Guidance - centre-based and information services - EIC Liberec

budget 154 820 CZK

Share in financing of the project	%
Ministry of Work and Social Affairs	56
Preciosa Foundation	19
Jablonec nad Nisou local authority	19
Česká Lípa local authority	5
sponsors	1

Acknowledgements



We would like to thank all those who took part in financing early intervention services for our clients:

A) CENTRAL FINANCIAL SOURCES:

<i>State Administration:</i> Ministerstvo práce a sociálních věcí Ministerstvo školství, mládeže a tělovýchovy Ministerstvo zdravotnictví	Nadace Nova Nadace pro obnovu a rozvoj NROS Nadace SENSIS Rotary Club Praha - Staré Město Výbor dobré vůle - Nadace Olgy Havlové	Levi Strauss s.r.o. Microsoft s.r.o. Organizační kancelář TRANSGAS a.s. UNIQA pojišťovna a.s. PRESS SERVIS	Aleš Cvrček s manželkou George J. Podzimek Marta Semonská Petr Stoklasa Přemysl Svora RNDr. Marek Šoltés zaměstnanci AOu a SUZ MV ČR
<i>foundations:</i> Hilton / Perkins International Nadace Dětský mozek Nadace Charty 77	<i>firms:</i> Key Systems	<i>individuals:</i> Ing. Jindřich Bass Ing. Jiří Blažejovský	

B) REGIONAL FINANCIAL SOURCES

České Budějovice <i>local and municipal authorities:</i> České Budějovice Jindřichův Hradec Sušice Veselí nad Lužnicí	<i>firms:</i> Artypa Sykra, s.r.o., Holubov Coca-Cola České Budějovice Dobrá čajovna České Budějovice Elektrocentrum KBT s.r.o. V.Mýto Fénix s.r.o. Koberce K+K Levi Strauss	Maso-uzeniny Libor Novák Pekast s.r.o. Rumpold Vodňany s.r.o. Rutipol s.r.o. SIKO České Budějovice Stepok s.r.o. UPC Česká republika a.s. Výroba hraček p. Máčová	WIP Reklama s.r.o. Žužo - Lido p. Candra <i>foundations and non-profit organisations:</i> Občanské sdružení Domino Společnost „E“ o.s.
---	---	--	--

Brno <i>local and municipal authorities:</i> Boskovice Brno Brno - ÚMČ Maloměřice Brno - ÚMČ Kr. Pole Bystřice pod Hostýnem	Dolní Bojanovice Kuřim Otrokovice Pohořelice Svratka Třebíč Věcov	<i>firms:</i> Aventis CropScience CR/SR <i>foundations and non-profit organisations:</i> Nadace Civilia	<i>individuals:</i> pan David pan Kudela Jandovi Jitka Morávková pan Sedlačko
--	---	--	--

Liberec <i>local and municipal authorities:</i> Bílá Třemešná Česká Kamenice Česká Lípa Dubá	Jablonec nad Nisou Liberec Liberec - ZSF Smržovka Trutnov Vichová nad Jizerou	<i>firms:</i> Czech Forwarding Agency s.r.o. Rekultivace, a.s. Severočeská energetika, a.s.	<i>foundations and non-profit organisations:</i> NROS - Pomozte dětem Nadace Preciosa
--	--	--	---

Olomouc <i>local and municipal authorities:</i> Býškovice Dřevnovice Horní Bečva Klenovice na Hané Kojetín	Lešany Městečko Trnávka Morkovice Náklo Olomouc Prostějov Přerov	Rohozná Stavenice Strážisko Těchonín Trnávka Vsetín Zábřeh	Zubří Žalkovice Veselíčko <i>firms:</i> Johnson and Johnson
---	--	--	---

Ostrava <i>local and municipal authorities:</i> Albrechtice Frýdlant nad Ostravicí	Hať Kopřivnice Krasov Most u Jablunkova	Opava Ostrava Ostrava-Jih Přívoz	Stěbořice Stonava Moravská Ostrava
--	--	---	--

Praha <i>local and municipal authorities:</i> Černčice Cheb Chomutov Jirkov Kralupy Libčice nad Vltavou Libiš Mariánské Lázně Most Nechanice Plzeň Praha MČ Praha 1	MČ Praha 3 MČ Praha 6 Proseč Stráž u Tachova Sušice Včelákov Veltrusy Vítězná Vroutek Zeleneč <i>firms:</i> Česká pojišťovna, a.s. Radost-Ondřejiček hračky Hasičská vzájemná pojišťovna	Lekkerland OK FOOD s.r.o. MAFRA, a.s. Milan Mašek - instalatérské potřeby Medesa s.r.o. MERO ČR a.s. Siemens Build. Tech. Středočeská plynárenská a.s. SUDOP Praha a.s. <i>foundations and non-profit organisations:</i> ROTARY Club Praha Staré Město <i>Individuals:</i> Jiří Čech	Roman Hajšman MUDr. Hlavinková Ing. Luboš Klouda paní Kuhnová Neupauerovi MUDr. Jan Roth Andrej Pastorek Alexandra Pexiederová PaedDr. Markéta Skalická Vl. Trávníčková PaedDr. Jana Vachulová Iveta Vyšejnová paní Žďárská
--	---	---	---